

# High Security Shipping You Can Trust



**BOYLE**  
**TRANSPORTATION**  
We deliver security.™

# We deliver security.

**Boyle Transportation** is the premier provider of Transportation Protective Services (TPS) to the Department of Defense (DOD) and shippers of security-sensitive cargo. Whether it's an exclusive-use truck, our cost-effective small shipment services, or dedicated fleet solutions, you can trust our proven delivery system to help you manage the risks inherent in the shipping process.

When your shipment requires continuous monitoring and surveillance by trained professionals, we deliver:

- security-sensitive hazardous material including explosives and radioactive material
- pharmaceuticals, biotech and life sciences equipment
- high-tech equipment
- high-value cargo
- classified material
- emergency distributions

Since 1971, we have focused on high security shipments with a unique business model. We are the only shipping company to employ 100% professional drivers and company owned equipment — no subcontractors handle your shipments. Our operations center is staffed with trained experts 24/7 for both customer and driver support, giving us the flexibility to respond to your needs immediately. And we continually update our technology and services to ensure the best shipping experience possible.

You get the ultimate in secure supply chain shipping with dedication and innovation. And that means you can ship with confidence.

**BOYLE**  
**TRANSPORTATION**



## Driven to perform.

No other company's performance ratings can match Boyle Transportation's. Our innovative approaches, people, and equipment have earned us a reputation as the most reliable high-security carrier. We are dedicated to minimizing your risks, keeping your cargo safe, and eliminating costly shipping delays with rock-solid dependability.

Our dedication to superior safety performance has resulted in industry-leading performance:

- the best on-time ratings: 99% (100% for highest security shipments)
- the lowest claims ratio in the industry
- the best safety performance record among DOD-authorized carriers
- earning ISO 9001:2000 designation since 1998

The military trusts their shipments to us too. In fact, we have earned multiple Quality Awards from the Military Surface Deployment and Distribution Command, and earned an "Excellent" rating from the Department of Energy (DOE).

## Keeping a laser-focus on security.

Never take security for granted. Boyle Transportation operates within the most stringent security guidelines in the industry, making us the most trustworthy carrier of sensitive cargo. Our high standards offer the ultimate in secure supply chain procedures. This emphasis on security includes:

- comprehensive background investigations for all employees, not just drivers
- no third-party operators or independent contractors
- compliance with National Industrial Security Program for classified material
- C-TPAT certified and compliant with TSA's recommended security action items
- layered security with state-of-the-art equipment, communications, and information systems
- extensive and ongoing security training for all employees

We are DOD approved to provide:

- Constant Surveillance Service
- Dual-Driver Protective Service
- Extra Driver
- Protective Security Service
- Satellite Motor Surveillance Service
- Security Escort Vehicle

## Unmatched safety record.

Boyle Transportation has the best safety performance record among DOD-authorized carriers. New professional drivers undergo a comprehensive, on-site, function-specific training, and safety training is continuous. We specifically address accident avoidance. We also train extensively in hazmat safety and security.

But safety doesn't stop with our drivers, every employee in the company is responsible and accountable for safety.

## How do you keep score on safety?

Roadside inspections that result in Out-of-Service ratings are one of the best measures of safety performance, an ongoing measure of a fleet's safety. The higher a carrier's Out-of-Service rate, the more likely your shipment will be improperly handled or delayed.

Out-of-Service Rates		
	Boyle Transportation	Other Carriers' Average
Driver	<2%	6.8%
Hazmat	0%	5.39%
Vehicle	1.3%	23.14%

Source: DOT Federal Motor Carrier Safety Administration (February 2008)

# Your partner in risk management.

We take a structured approach to assessing and actively managing risk in our operations. Our superior safety performance is attributable to our leadership role in developing and implementing safety technologies that mitigate risks in transit. We equip each truck with:

## Collision Avoidance System

Radar-based collision avoidance system ensures adequate stopping distance, including active cruise control.

## Roll Stability Control

Sensors and active controls help prevent vehicle rollovers.

## Lane Departure Warning System

Lane marking readers alert the driver of drifting.

## Side Angle Cameras

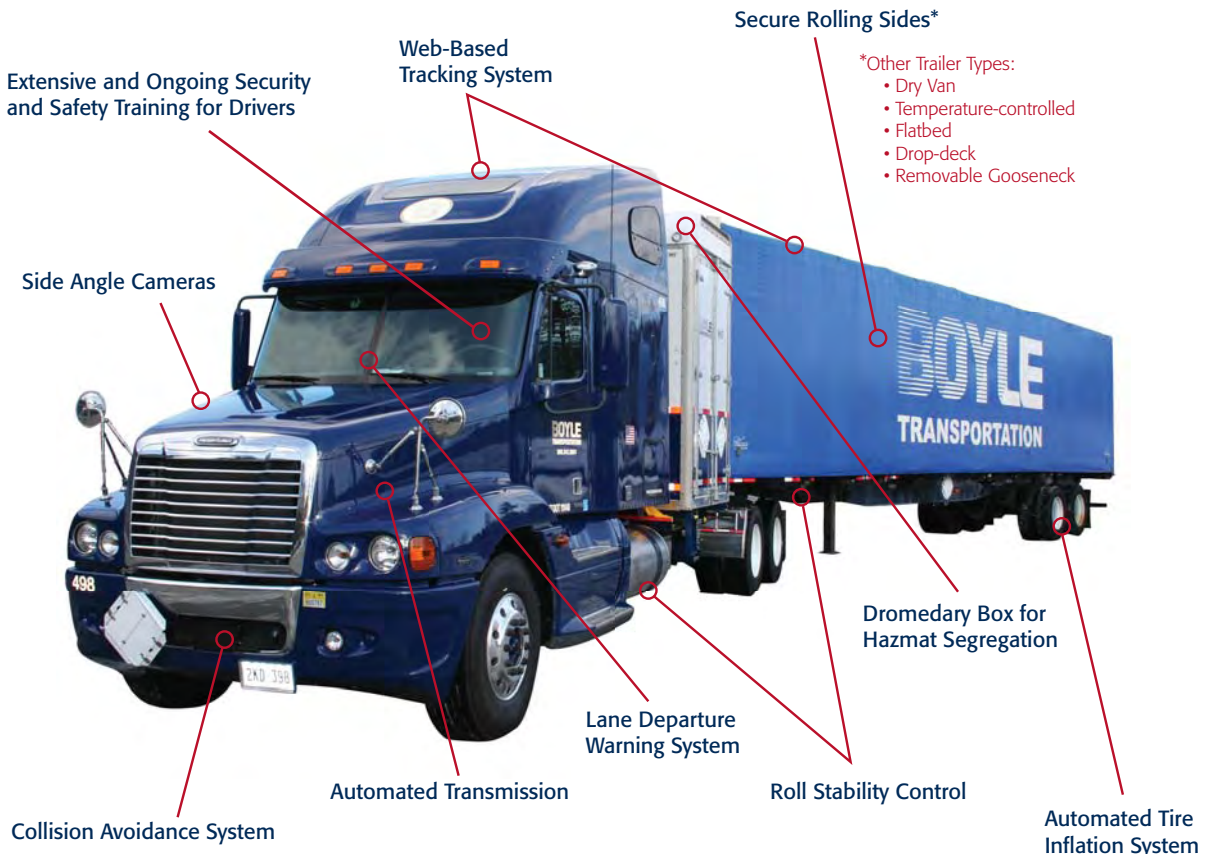
Video camera boosts driver visibility and prevents lane-changing accidents.

## Automated Transmissions

Two-pedal automated transmissions enable the driver to keep both hands on the wheel.

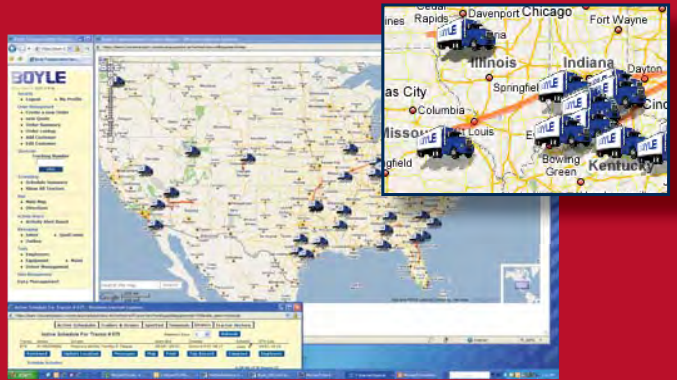
## Automated Tire Inflation System (trailers)

Reduced risk of blowouts since tires remain properly inflated.



## Flexible web-based tracking systems give you complete visibility.

With Boyle Transportation, you can follow your shipment from door to door for increased peace of mind. Our easy-to-navigate web-based system tracks shipments by tracking number or bill of lading number. Email notifications, EDI and customized web services are also available. You get detailed tracking



data with status, time, location and delivery information. Truck locations may be polled at any time and extensive information on cargo and sensor status can also be provided.

*Tracking information for highly secure shipments is not made available on the public web site.*

### Case study:

## Our custom trailer design eliminates security problems.

Covering your cargo with tarps is a less than ideal solution: they can tear and rip during transit, and leave a silhouette that reveals the truck's contents.

Our secure rolling sides eliminate all that, completely concealing your cargo for its entire journey. Plus, our design facilitates loading and unloading with access from side, overhead, or rear. It all adds up to secure, safe and on-time loading and unloading.

## Dedicated fleet drivers deliver unparalleled service.

We service critical requirements, often encompassing high-security and specialized equipment for shippers that had traditionally used private fleets to directly service their customers. We can augment or replace existing fleets while maintaining and improving consistency, reliability and visibility. We embrace your mission and our professional drivers serve as proper ambassadors for your organization.



# Compare and it's clear.

Who should you trust with your mission-critical shipments?

## Boyle Transportation

## The Competition

### Operations

---

- 24/7 continuous operation
- Highly qualified support for emergency response with hazmat specialists
- Industry-leading systems for route monitoring and geofencing

- Limited hours
- Clerks paged after hours for emergencies
- No driver assistance or route monitoring

### People

---

- <15% turnover, average 7 years tenure
- Company employees that meet the most rigorous standards in the industry
- Extensive training in hazmat safety and security

- 125% average turnover
- 3<sup>rd</sup> party owner/operator
- Little or no training

### Performance

---

- >99% on time delivery
- .0001% claims ratio

- <95% on-time delivery
- >.25% claims ratio

### Equipment

---

- Company owned and operated
- Maintained to OEM standards
- Custom designed trailers
- On-site trailer pools
- Tractors updated every 3 years
- Latest safety measures

- Owner/operator supplies equipment
- No trailer pool or customized equipment
- Older tractors
- No standard maintenance routine
- No investment in safety features

# You can rely on Boyle Transportation.

Call us today to see how we can make your shipping safer and more secure.

Or visit us at [www.boyletransport.com](http://www.boyletransport.com).



**Corporate Headquarters**

15 Riverhurst Road

Billerica, MA 01821-3425

800-343-2004

[www.boyletransport.com](http://www.boyletransport.com)